

VORTAC TUL <b>114.4</b> Chan <b>91</b>	APP CRS <b>060°</b>	Rwy Idg TDZE Apt Elev	<b>N/A</b> <b>N/A</b> <b>733</b>
--	------------------------	-----------------------------	--

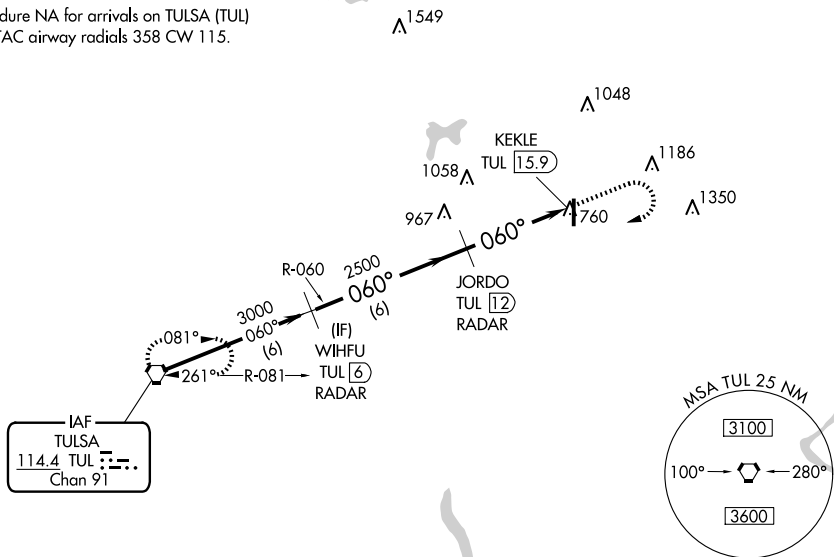
**VOR/DME-B**  
CLAREMORE RGNL (GCM)

▼ If local altimeter setting not received, use Tulsa Intl altimeter setting and increase all MDAs 60 feet.

MISSED APPROACH: Climb to 2500 then climbing right turn to 3000 direct TUL VORTAC and hold.

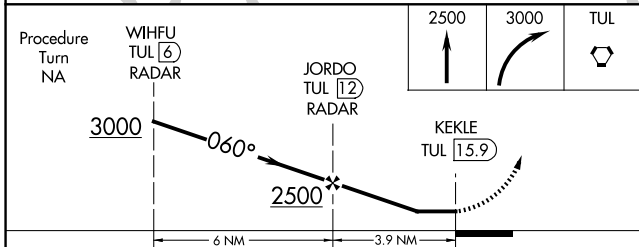
AWOS-3PT <b>119.925</b>	TULSA APP CON <b>119.1 360.825</b>	UNICOM <b>122.7 (CTAF) 0</b>
----------------------------	---------------------------------------	---------------------------------

Procedure NA for arrivals on TULSA (TUL)  
VORTAC airway radials 358 CW 115.



SC-1, 19 FEB 2026 to 19 MAR 2026

SC-1, 19 FEB 2026 to 19 MAR 2026



CATEGORY	A	B	C	D
☐ CIRCLING	1260-1	527 (600-1)	1380-1¾ 647 (700-1¾)	NA

ELEV 733

Vertical scale diagram for ELEV 733. The scale has markings at 81, 0, and 36. A slope of 0.7% UP is indicated. A star symbol is present near the 0 mark.

MIRL Rwy 18-36  
REIL Rwy 36 0