

WAAS CH 42638 W09A	APP CRS 093°	Rwy Ldg TDZE Apt Elev	4201 708 708
--	------------------------	-----------------------------	---

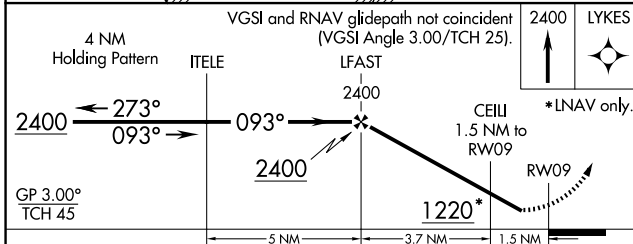
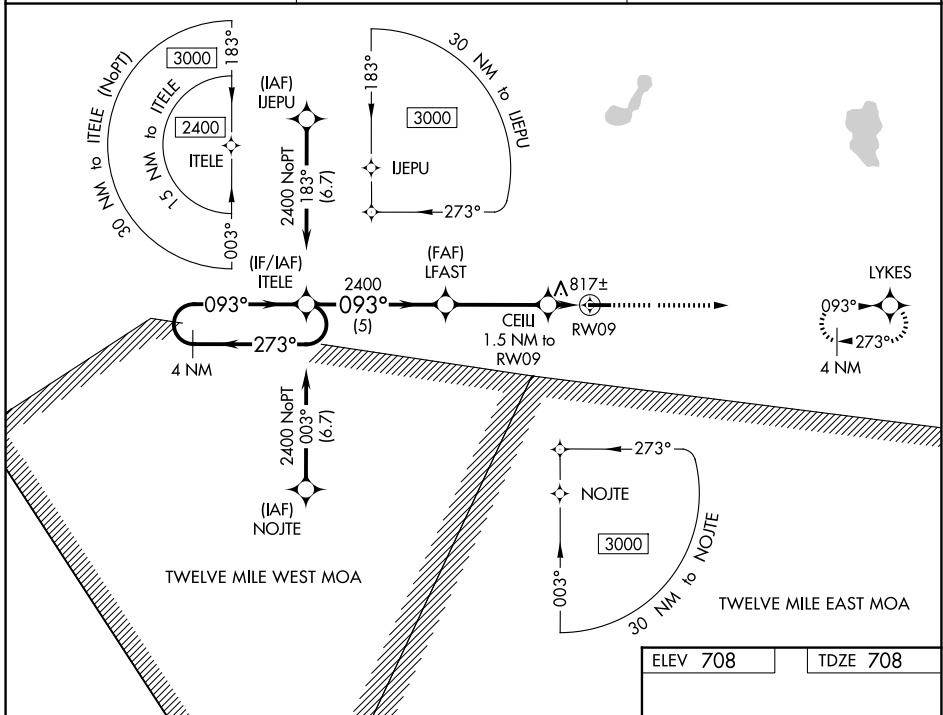
RNAV (GPS) RWY 9

ARENS FLD (RWN)

▼ Baro-VNAV NA. Use Knox altimeter setting; when not received, use Rochester altimeter setting and increase all DA/MDA 20 feet and LNAV Cat C visibility 1/8 mile.
▲ NA DME/DME RNP-0.3 NA. Helicopter visibility reduction below 3/4 SM NA.

MISSED APPROACH: Climb to 2400 direct LYKES and hold.

OXI AWOS-3 135.775	SOUTH BEND APP CON * 132.05 257.8	UNICOM 122.8 (CTAF) 1
------------------------------	---	---------------------------------



ELEV 708	TDZE 708
<p>MIRL Rwy 9-27 1</p> <p>REIL Rws 9 and 27 1</p>	

EC-2, 19 FEB 2026 to 19 MAR 2026

EC-2, 19 FEB 2026 to 19 MAR 2026