

WAAS CH <b>86227</b> <b>W24A</b>	APP CRS <b>238°</b>	Rwy Ldg TDZE Apt Elev	<b>6201</b> <b>2087</b> <b>2105</b>
--	------------------------	-----------------------------	---

# RNAV (GPS) RWY 24

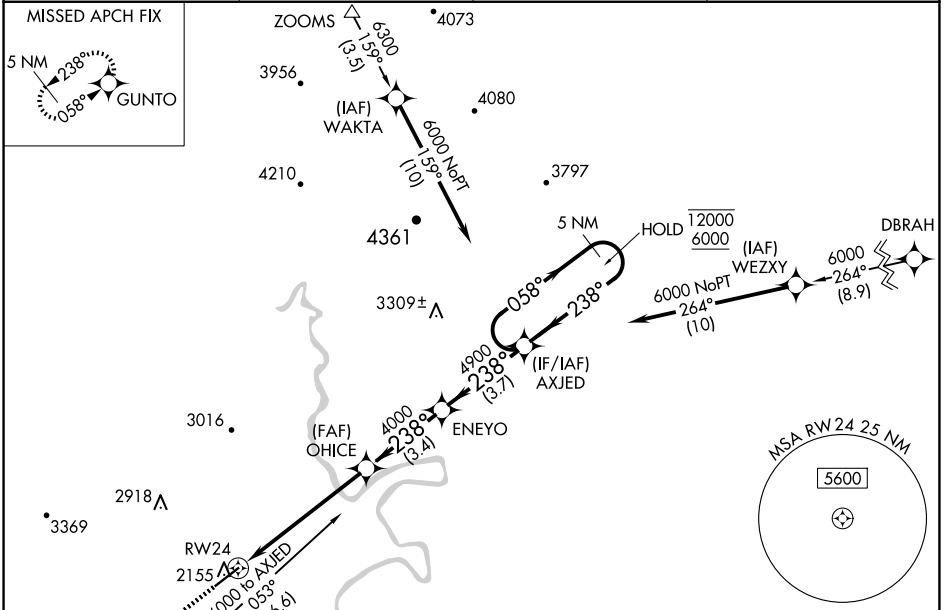
NEW RIVER VALLEY (PSK)

RNP APCH - GPS.

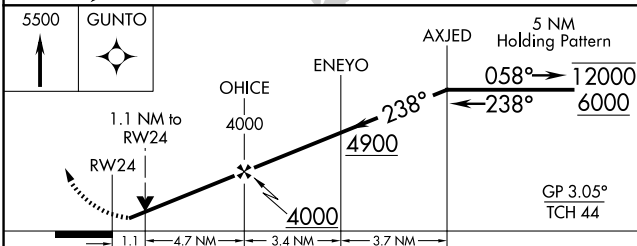
**⚠** Circling NA for Cat D northwest of Rwy 6-24. For uncompensated Baro-VNAV systems, LNAV/VNAV NA below -19°C or above 54°C. Rwy 24 helicopter visibility reduction below 3/4 SM NA. Baro-VNAV and VDP NA when using BCB altimeter setting.

**⚠** MISSED APPROACH: Climb to 5500 direct GUNTO and hold, continue climb-in-hold.

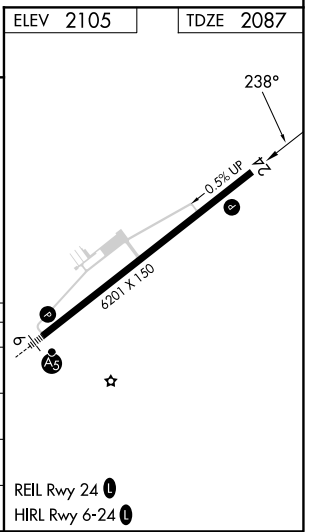
AWOS-3 <b>127.375</b>	ROANOKE APP CON <b>126.0 339.8</b>	ROANOKE CLNC DEL <b>121.7</b>	UNICOM <b>122.7 (CTAF)</b> <b>0</b>
--------------------------	---------------------------------------	----------------------------------	--



5500	GUNTO
------	-------



CATEGORY	A	B	C	D
LPV DA	2337-1		250 (300-1)	
LNAV/VNAV DA	2502-1 1/8		415 (400-1 1/8)	
LNAV MDA	2480-1	393 (400-1)	2480-1 1/8	393 (400-1 1/8)
CIRCLING	2640-1 535 (600-1)	2680-1 575 (600-1)	2780-2 675 (700-2)	2780-2 1/4 675 (700-2 1/4)



NE-3, 19 FEB 2026 to 19 MAR 2026

NE-3, 19 FEB 2026 to 19 MAR 2026