

VOR/DME TBD	APP CRS	Rwy Ldg	4999
117.15	302°	TDZE	9
Chan 118 (Y)		Apt Elev	9

# VOR RWY 30

HOUMA-TERREBONNE (HUM)

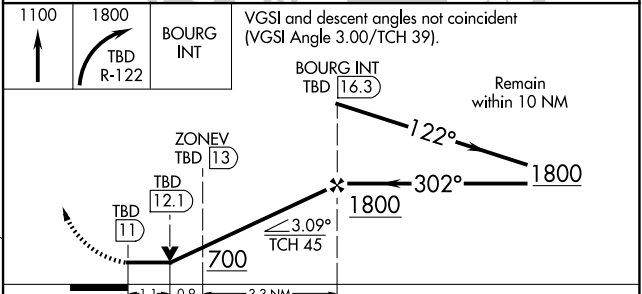
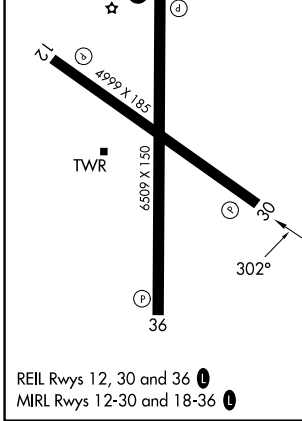
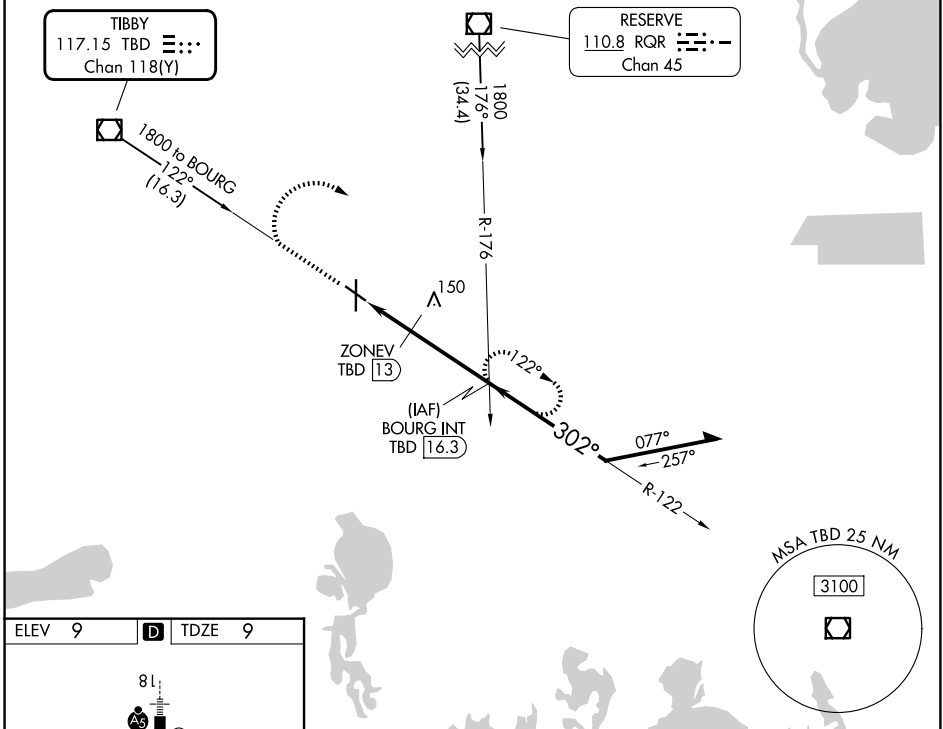
DME required.

**▼** Rwy 30 helicopter visibility reduction below 3/4 SM NA. VDP NA when using MSY altimeter setting. When local altimeter setting not received, use MSY altimeter setting and increase all MDAs 80 feet, and S-30 and Circling visibility Cats C/D 1/4 SM.

**▲**

MISSED APPROACH: Climb to 1100 then climbing right turn to 1800 on TBD VOR/DME R-122 to BOURG INT/TBD 16.3 DME and hold, continue climb-in-hold to 1800.

ATIS	NEW ORLEANS APP CON	HOUMA TOWER★	GND CON	UNICOM
120.25	118.9 350.35	125.3 (CTAF) 346.3	123.875	122.95



CATEGORY	A	B	C	D
S-30	400-1	391 (400-1)	400-1 1/8	391 (400-1 1/8)
CIRCLING	480-1	471 (500-1)	760-2 1/4 751 (800-2 1/4)	760-2 1/2 751 (800-2 1/2)

SC-4, 11 JUN 2026 to 09 JUL 2026

SC-4, 11 JUN 2026 to 09 JUL 2026