

WAAS CH <b>56402</b> <b>W35A</b>	APP CRS <b>346°</b>	Rwy Ldg TDZE Apt Elev	<b>6997</b> <b>499</b> <b>505</b>
--	------------------------	-----------------------------	---

# RNAV (GPS) RWY 35

REDDING RGNL (RDD)

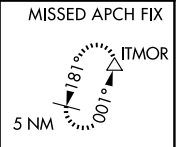
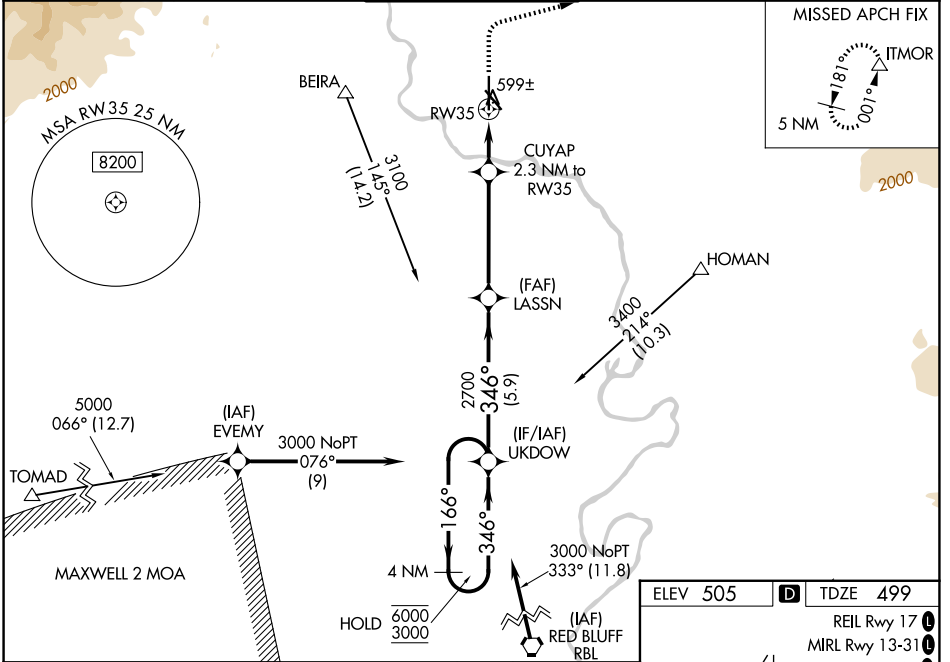
RNP APCH - GPS.

**⚠** For uncompensated Baro-VNAV systems, LNAV/VNAV NA below -2°C or above 54°C. Circling Rwy 13 NA at night. Rwy 35 helicopter visibility reduction below 3/4 SM NA. Inop table does not apply to LPV all Cats. LNAV/VNAV minimums: For inop ALS, increase visibility all Cats to 3/4 SM. LNAV minimums: For inop ALS, increase visibility all Cats to 1 SM.

MALSR

MISSED APPROACH: Climb to 1700 then climbing right turn to 5000 direct ITMOR, continue climb-in-hold to 5000.

ATIS <b>124.1</b>	OAKLAND CENTER <b>132.2 350.3</b>	REDDING TOWER ★ <b>119.8(CTAF) 0 269.25</b>	GND CON <b>121.7</b>	UNICOM <b>122.95</b>
----------------------	--------------------------------------	--	-------------------------	-------------------------



4 NM Holding Pattern

VGSI and RNAV glidepath not coincident (VGSI Angle 3.00/TCH 55).

1700 5000 ITMOR

UKDOW

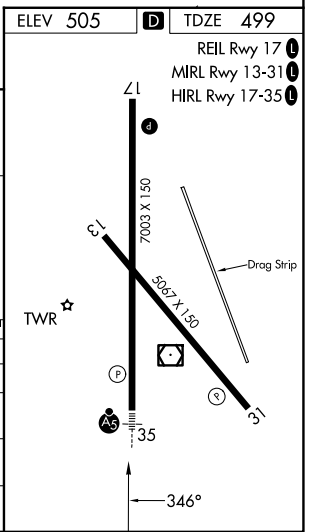
6000 ← 166° → 3000

GP 3.00° TCH 52

2700 1260

5.9 NM 4.5 NM 1.3 NM 1 NM

CATEGORY	A	B	C	D
LPV DA		749-3/4	250 (300-3/4)	
LNAV/VNAV DA		768-3/4	269 (300-3/4)	
LNAV MDA		860-3/4	361 (400-3/4)	
CIRCLING	960-1 455 (500-1)	1000-1 495 (500-1)	1120-1 3/4 615 (700-1 3/4)	1340-2 3/4 835 (900-2 3/4)



SW-2, 11 JUN 2026 to 09 JUL 2026

SW-2, 11 JUN 2026 to 09 JUL 2026