

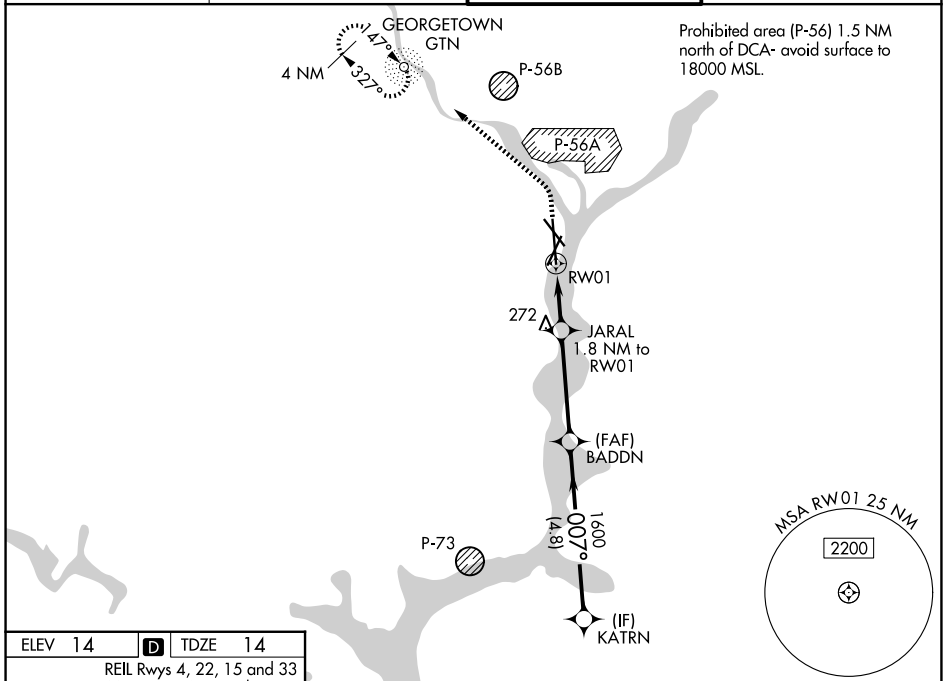
WAAS CH 66047 W01A	APP CRS 007°	Rwy Ldg TDZE Apt Elev	6869 14 14
--	------------------------	-----------------------------	---------------------------------------

RNAV (GPS) RWY 1

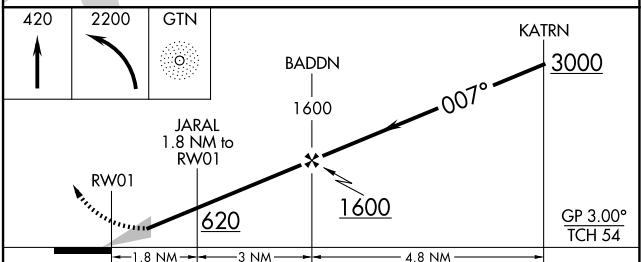
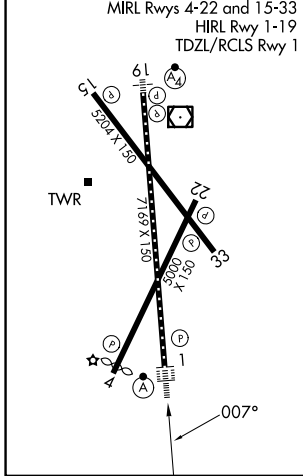
RONALD REAGAN WASHINGTON NTL (DCA)

RNP APCH - GPS.	ALSF-2	MISSED APPROACH: Climb to 420 then climbing left turn to 2200 direct GTN NDB and hold, continue climb-in-hold to 2200.
<p>▼ For uncompensated Baro-VNAV systems, LNAV/VNAV NA below -7°C or above 54°C. Circling NA northeast of Rwy 15-33. Circling NA to Rwy 4.</p> <p>▲ For inop ALS, increase LNAV/VNAV all Cats visibility to 1 3/8 SM.</p>		

D-ATIS 132.65	POTOMAC APP CON 119.85 239.25 (W/S) 124.2 360.8 (E)	WASHINGTON TOWER 119.1 257.6	GND CON 121.7 257.6
-------------------------	---	--	-------------------------------



ELEV 14	D	TDZE 14
---------	----------	---------



CATEGORY	A	B	C	D
LPV DA		214/18	200 (200-1/2)	
LNAV/VNAV DA		497/50	483 (500-1)	
LNAV MDA	540/24	526 (600-1/2)	540/55	526 (600-1)
CIRCLING	720-1 706 (800-1)	900-1 1/4 886 (900-1 1/4)	900-2 3/4 886 (900-2 3/4)	900-3 886 (900-3)

NE-3, 11 JUN 2026 to 09 JUL 2026

NE-3, 11 JUN 2026 to 09 JUL 2026