

APP CRS	Rwy Ldg	<b>7200</b>
<b>290°</b>	TDZE	<b>56</b>
	Apt Elev	<b>76</b>

# RNAV (RNP) Z RWY 29

PORTLAND INTL JETPORT (PWM)

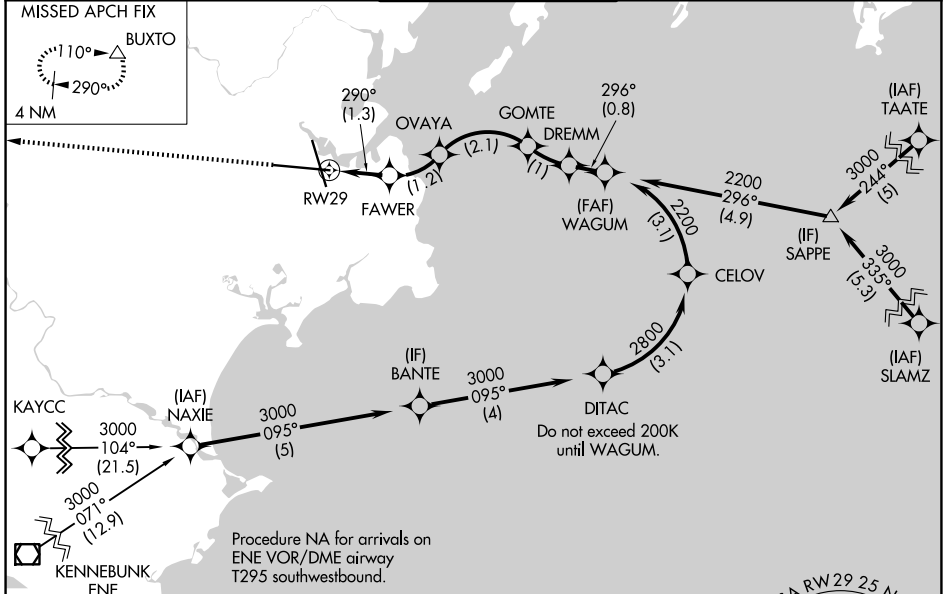
RNP AR APCH - GPS, RF. Authorization required.

▼ For uncompensated Baro-VNAV systems, procedure NA below -15°C or above 54°C. For inop ALS, increase RNP 0.10 all Cats visibility to 4000. For inop ALS, increase RNP 0.13 all Cats visibility to 6000. For inop ALS, increase RNP 0.30 all Cats visibility to 1 3/8 SM. When local altimeter setting not received, procedure NA. Procedure NA for aircraft with wingspan greater than 136 feet.

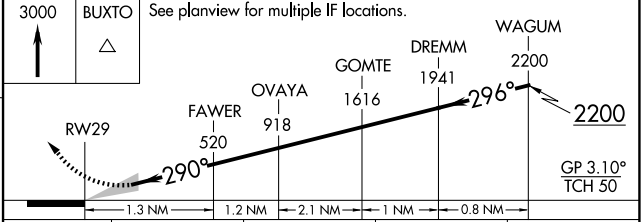
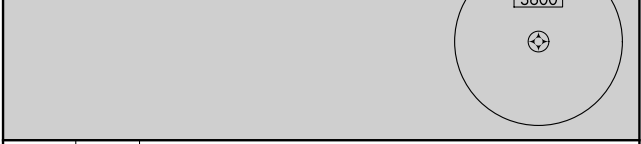
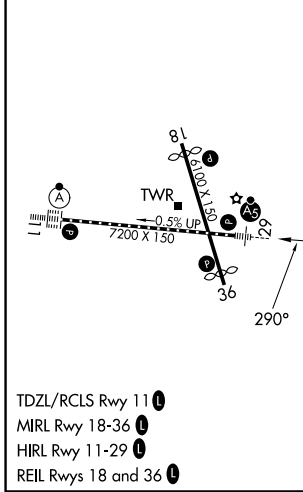


MISSED APPROACH: Climb to 3000 direct BUXTO and hold, continue climb-in-hold to 3000.

ATIS <b>119.05</b>	PORTLAND APP CON ★ <b>119.75 269.35</b>	PORTLAND TOWER★ <b>120.9 0 (CTAF) 257.8</b>	GND CON <b>121.9</b>	UNICOM <b>122.95</b>
-----------------------	--	--	-------------------------	-------------------------



ELEV 76	<b>D</b>	TDZE 56
---------	----------	---------



CATEGORY	A	B	C	D
RNP 0.10 DA		306/24	250 (300-1/2)	
RNP 0.13 DA		438/35	382 (400-5/8)	
RNP 0.30 DA		533/50	477 (500-1)	

**AUTHORIZATION REQUIRED**

NE-1, 11 JUN 2026 to 09 JUL 2026

NE-1, 11 JUN 2026 to 09 JUL 2026