

WAAS CH 42947 W13A	APP CRS 130°	Rwy Ldg TDZE Apt Elev	3038 1159 1167
--	------------------------	-----------------------------	---

RNAV (GPS) RWY 13

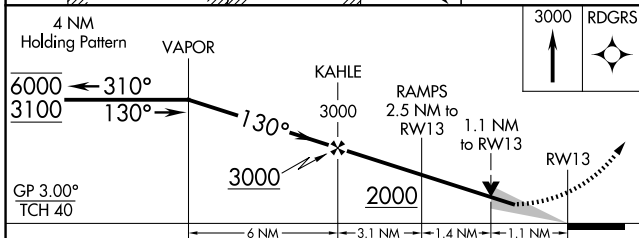
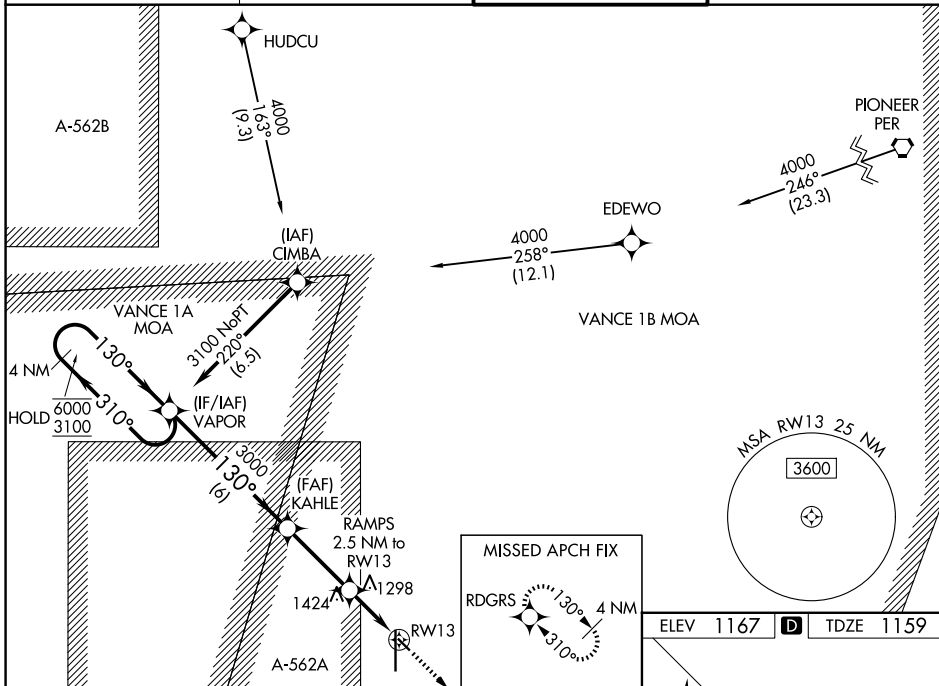
ENID WOODRING RGNL (WDG)

RNP APCH - GPS.

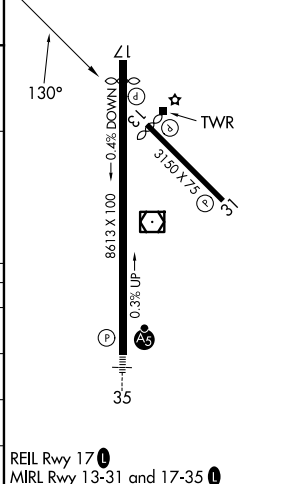
▼ For uncompensated Baro-VNAV systems, LNAV/VNAV NA below -17°C or above 54°C. Baro-VNAV and VDP NA when using GOK altimeter setting. When local altimeter setting not received, use GOK altimeter setting and increase LPV DA to 1507 feet and all visibilities ¼SM. Increase LNAV/VNAV DA to 1523 feet and all visibilities ½SM. Increase all MDAs 100 feet and LNAV visibility Cat C ¼SM, and Circling visibility Cat C ½SM.

MISSED APPROACH:
Climb to 3000 direct
RDGRS and hold.

AWOS-3PT 123.725	VANCE APP CON* 121.3 346.325	WOODRING TOWER* 118.9 (CTAF) 0 257.95	GND CON 121.925
----------------------------	--	---	---------------------------



ELEV 1167	D	TDZE 1159
-----------	---	-----------



CATEGORY	A	B	C	D
LPV DA	1409-¾	250 (300-¾)		NA
LNAV/VNAV DA	1425-⅞	266 (300-⅞)		NA
LNAV MDA	1560-1	401 (400-1)	1560-1⅞ 401 (400-1⅞)	NA
CIRCLING	1760-1	593 (600-1)	1820-1¾ 653 (700-1¾)	NA

REIL Rwy 17
MRL Rwy 13-31 and 17-35

SC-1, 11 JUN 2026 to 09 JUL 2026

SC-1, 11 JUN 2026 to 09 JUL 2026