

| | | |
|--|------------------------|---|
| WAAS CH 56515 W01A | APP CRS 003° | Rwy Ldg TDZE 748 Apt Elev 748 |
|--|------------------------|---|

RNAV (GPS) Y RWY 1L

CHARLOTTE/DOUGLAS INTL (CLT)

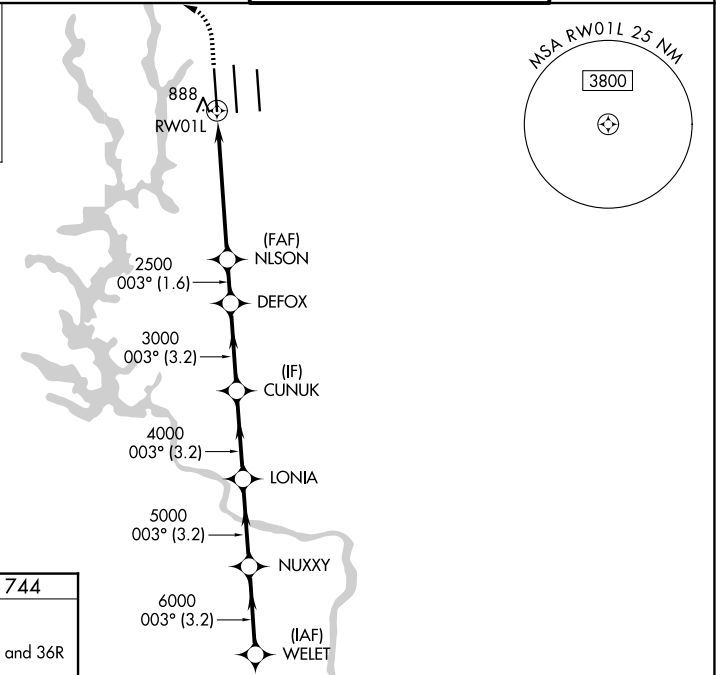
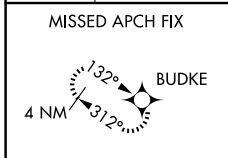
RNP APCH - GPS.

Simultaneous approach authorized. LNAV procedure NA during simultaneous operations.
 Use of FD or AP required during simultaneous operations. Circling NA at night.
 For uncompensated Baro-VNAV systems, LNAV/VNAV NA below -7°C or above 54°C.
 For inop ALS, increase LNAV/VNAV all Cats visibility to RVR 4500.

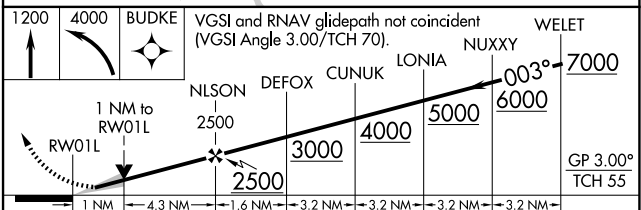
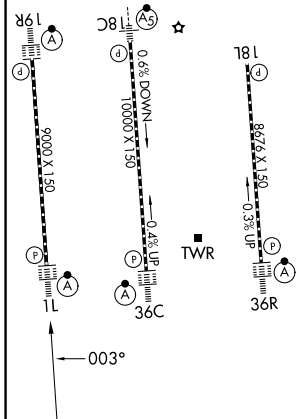
ALS-F-2

MISSED APPROACH: Climb to 1200 then climbing left turn to 4000 direct BUDKE and hold.

| D-ATIS | CHARLOTTE APP CON | | CHARLOTTE TOWER | | GND CON |
|---------------|----------------------------|--------------------------|-------------------------------------|--|------------------------|
| 121.15 | 128.325 (001°-119°) | 257.2 (180°-359°) | 118.1 257.8 (18L-36R) | | 121.8 348.6 (W) |
| | 120.05 (120°-295°) | 307.8 (360°-179°) | 126.4 257.8 (18C-36C) | | 121.9 348.6 (E) |
| | 134.75 (296°-360°) | | 133.35 257.8 (1L-19R) | | |



| | | |
|-------------------------------------|----------|----------|
| ELEV 748 | D | TDZE 744 |
| HIRL all Rwys | | |
| REIL Rwy 18L | | |
| TDZL/RCLS Rwys 1L, 19R, 36C and 36R | | |



| CATEGORY | A | B | C | D |
|--------------|---------|-------------|-------------------------|-------------------------|
| LPV DA | 944/18 | | 200 (200-½) | |
| LNAV/VNAV DA | 1049/24 | | 305 (400-½) | |
| LNAV MDA | 1140/24 | 396 (400-½) | 1140/35 | 396 (400-¾) |
| CIRCLING | 1380-1 | 632 (700-1) | 1380-2¼ 632 (700-2¼) | 1500-2½ 752 (800-2½) |

SE-2, 11 JUN 2026 to 09 JUL 2026

SE-2, 11 JUN 2026 to 09 JUL 2026