

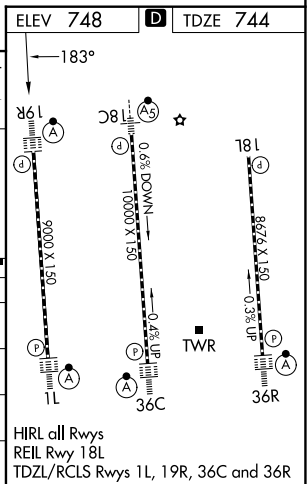
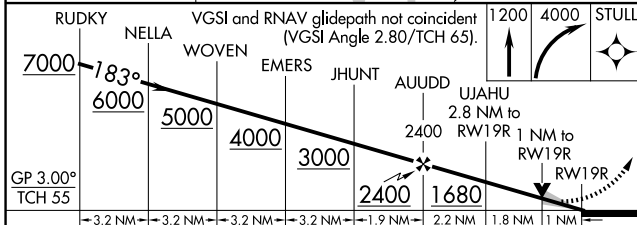
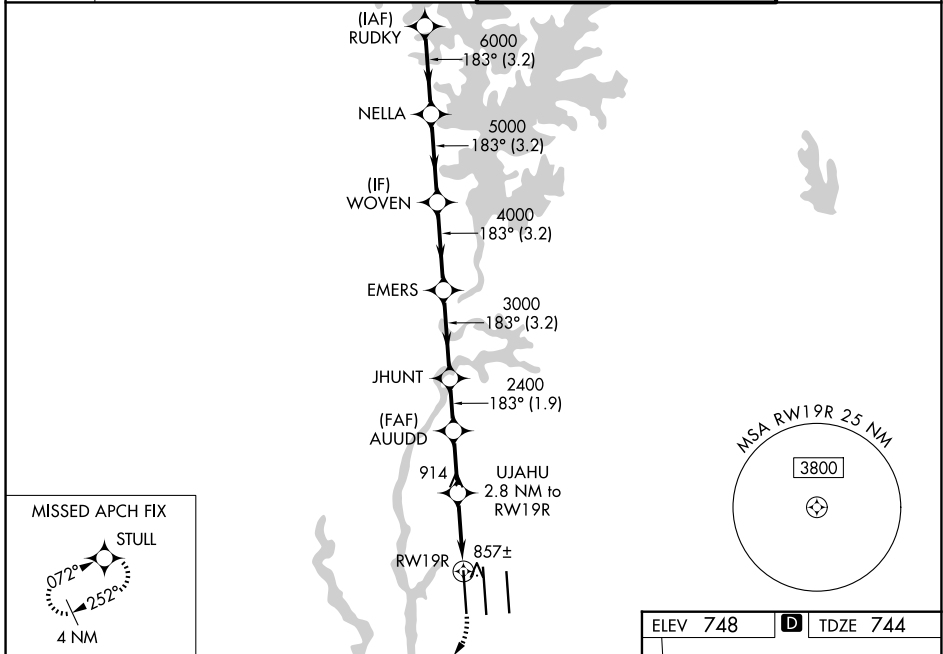
WAAS CH 82415 W19D	APP CRS 183°	Rwy Ldg 9000 TDZE 744 Apt Elev 748
--	------------------------	---

RNAV (GPS) Y RWY 19R

CHARLOTTE/DOUGLAS INTL (CLT)

RNP APCH - GPS.	<p>⚠ Simultaneous approach authorized. LNAV procedure NA during simultaneous operations. Circling NA at night. For uncompensated Baro-VNAV systems, LNAV/VNAV NA below -7°C or above 54°C. Use of FD or AP required during simultaneous operations. For inop ALS, increase LNAV/VNAV all Cats visibility to RVR 4500, increase LNAV Cat C/D visibility to RVR 5500.</p>	<p>ALSF-2</p>	<p>MISSED APPROACH: Climb to 1200 then climbing right turn to 4000 direct STULL and hold, continue climb-in-hold to 4000.</p>
-----------------	--	---------------	---

D-ATIS	CHARLOTTE APP CON	CHARLOTTE TOWER	GND CON
121.15	128.325 (001°-119°) 257.2 (180°-359°) 120.05 (120°-295°) 307.8 (360°-179°) 134.75 (296°-360°)	118.1 257.8 (18L-36R) 126.4 257.8 (18C-36C) 133.35 257.8 (1L-19R)	121.8 348.6 (W) 121.9 348.6 (E)



CATEGORY	A	B	C	D
LPV DA	944/18		200 (200-½)	
LNAV/VNAV DA	1018/24		274 (300-½)	
LNAV MDA	1120/24 376 (400-½)		1120/35 376 (400-¾)	
CIRCLING	1380-1 632 (700-1)		1500-2¼ 752 (800-2¼) 1500-2½ 752 (800-2½)	

SE-2, 11 JUN 2026 to 09 JUL 2026

SE-2, 11 JUN 2026 to 09 JUL 2026