

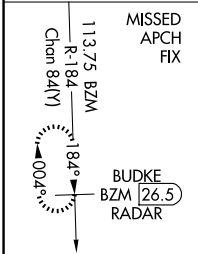
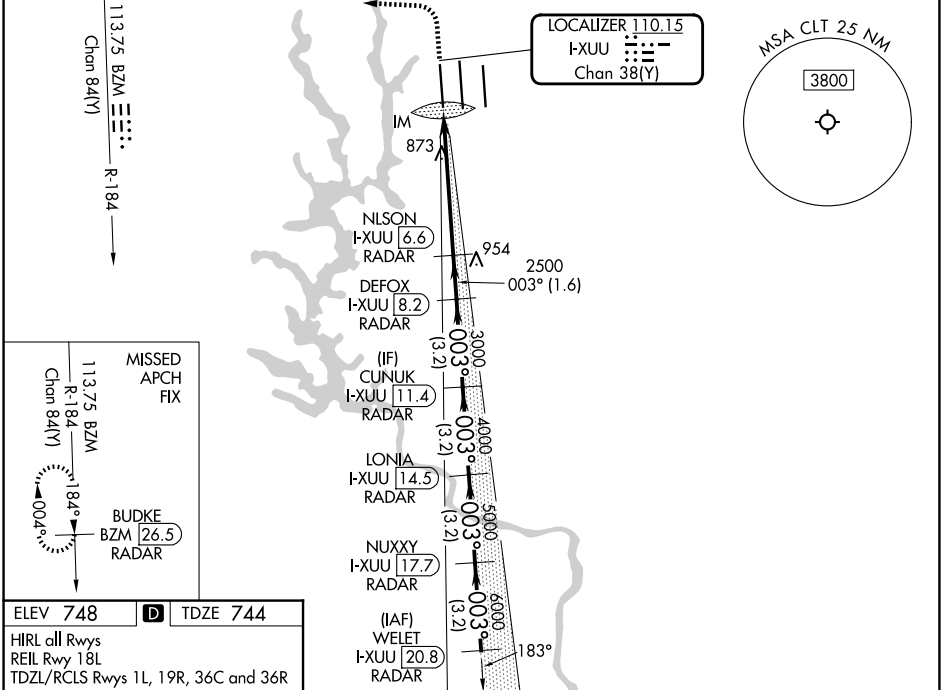
LOC/DME I-XUU <b>110.15</b> Chan 38(Y)	APP CRS <b>003°</b>	Rwy Ldg TDZE Apt Elev	<b>9000</b> <b>744</b> <b>748</b>
--	------------------------	-----------------------------	---

# ILS or LOC RWY 1L

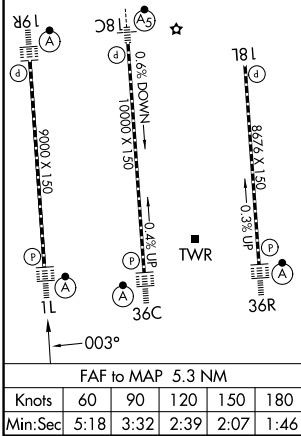
CHARLOTTE/DOUGLAS INTL (CLT)

DME or RADAR required. RADAR required for procedure entry.		ALSF-2 	MISSED APPROACH: Climb to 1200 then climbing left turn to 4000 on heading 280° and on BZM VOR/DME R-184 to BUDKE/BZM 26.5 DME/RADAR and hold.
Simultaneous approach authorized. Circling NA at night.			

D-ATIS <b>121.15</b>	CHARLOTTE APP CON		CHARLOTTE TOWER		GND CON
	<b>128.325</b> (001°-119°)	<b>257.2</b> (180°-359°)	<b>118.1</b>	<b>257.8</b> (18L-36R)	<b>121.8 348.6</b> (W)
	<b>120.05</b> (120°-295°)	<b>307.8</b> (360°-179°)	<b>126.4</b>	<b>257.8</b> (18C-36C)	<b>121.9 348.6</b> (E)
	<b>134.75</b> (296°-360°)		<b>133.35</b>	<b>257.8</b> (1L-19R)	



ELEV 748	<b>D</b>	TDZE 744
HIRL all Rwys		
REIL Rwy 18L		
TDZL/RCLS Rwys 1L, 19R, 36C and 36R		



1200	4000	BZM R-184	BUDKE BZM 26.5	VGSi and ILS glidepath not coincident (VGSi Angle 3.00/TCH 70).	WELET I-XUU 20.8 RADAR
CATEGORY A		CATEGORY B		CATEGORY C	
S-ILS 1L		944/18		200 (200-½)	
S-LOC 1L		1180/24		436 (500-½)	
CIRCLING		1380-1		632 (700-1)	
				1500-2¼	
				752 (800-2¼)	
				1500-2½	
				752 (800-2½)	

SE-2, 11 JUN 2026 to 09 JUL 2026

SE-2, 11 JUN 2026 to 09 JUL 2026