

LOC/DME I-RGS <b>110.15</b> Chan <b>38</b> (Y)	APP CRS <b>183°</b>	Rwy Ldg TDZE <b>744</b> Apt Elev <b>748</b>	<b>9000</b>
--	------------------------	---	-------------

# ILS or LOC RWY 19R

CHARLOTTE/DOUGLAS INTL (CLT)

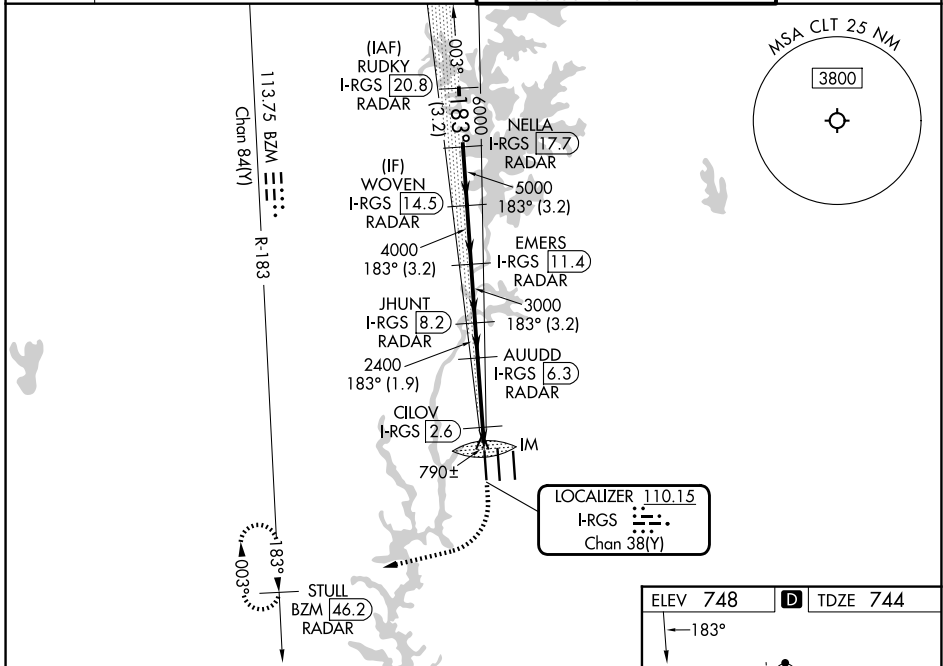
DME or RADAR required. RADAR required for procedure entry.

Simultaneous approach authorized. CLOV Minimums: For inp ALS, increase S-LOC 19R Cats C/D visibility to RVR 4500.

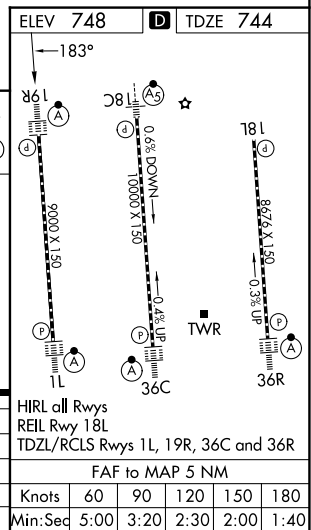
ALSF-2

MISSED APPROACH: Climb to 1200 then climbing right turn to 4000 on heading 280° and on BZM VOR/DME R-183 to STULL/BZM 46.2 DME/RADAR and hold, continue climb-in-hold to 4000.

D-ATIS <b>121.15</b>	CHARLOTTE APP CON		CHARLOTTE TOWER		GND CON
	<b>128.325</b> (001°-119°)	<b>257.2</b> (180°-359°)	<b>118.1</b>	<b>257.8</b> (18L-36R)	<b>121.8 348.6</b> (W)
	<b>120.05</b> (120°-295°)	<b>307.8</b> (360°-179°)	<b>126.4</b>	<b>257.8</b> (18C-36C)	<b>121.9 348.6</b> (E)
	<b>134.75</b> (296°-360°)		<b>133.35</b>	<b>257.8</b> (1L-19R)	



RUDKY I-RGS 20.8 RADAR	NELLA I-RGS 17.7 RADAR	WOVEN I-RGS 14.5 RADAR	JHUNT I-RGS 8.2 RADAR	AUUDD I-RGS 6.3 RADAR	CILOV I-RGS 2.6 RADAR	IM	STULL BZM 46.2 RADAR
VGSi and ILS glidepath not coincident (VGSi Angle 2.80/TCH 65).							
7000		6000		5000		4000	
183°		183°		183°		183°	
3.00°		3.00°		3.00°		3.00°	
TCH 55		TCH 55		TCH 55		TCH 55	
-3.2 NM		-3.2 NM		-3.2 NM		-3.2 NM	
-1.9 NM		-3.7 NM		0.5		0.7	
0.1		0.1		0.1		0.1	
CATEGORY	A		B		C		D
S-ILS 19R	944/18		200 (200-½)				
S-LOC 19R	1200/24 456 (500-½)		1200/45 456 (500-¾)				
CILOV FIX MINIMUMS (DME REQUIRED)							
S-LOC 19R	1040/24 296 (300-½)						



SE-2, 11 JUN 2026 to 09 JUL 2026

SE-2, 11 JUN 2026 to 09 JUL 2026