

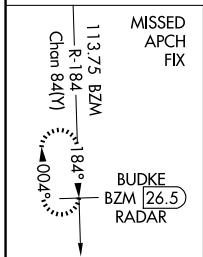
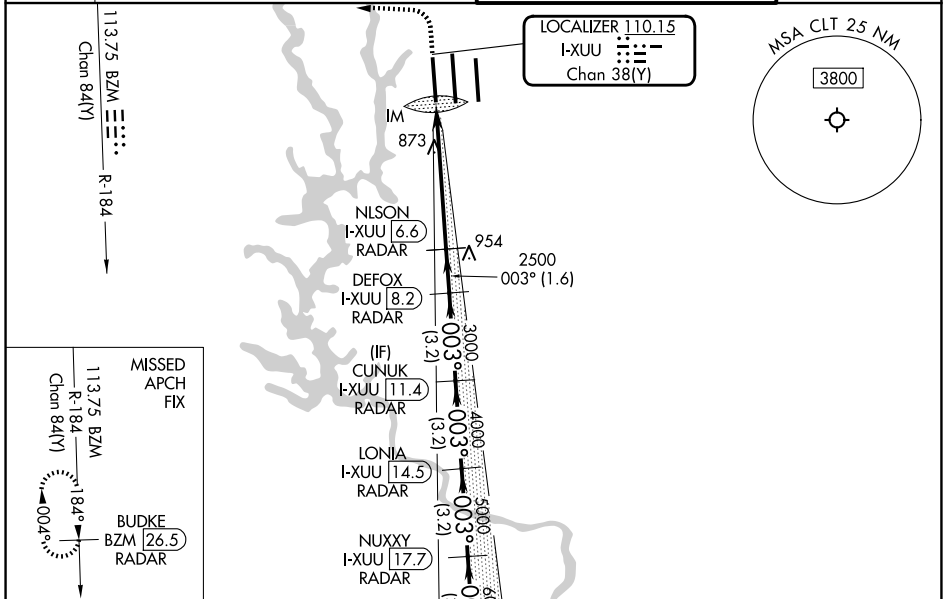
LOC/DME I-XUU 110.15 Chan 38(Y)	APP CRS 003°	Rwy Ldg 9000 TDZE 744 Apt Elev 748
--	------------------------	---

ILS RWY 1L (CAT II & III)

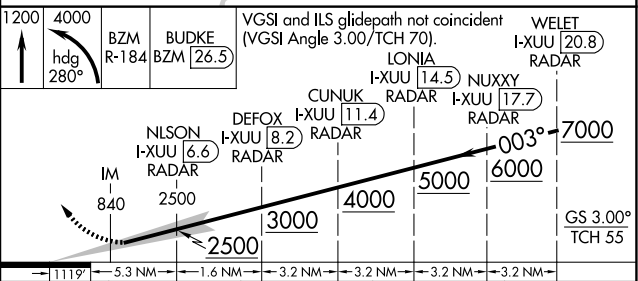
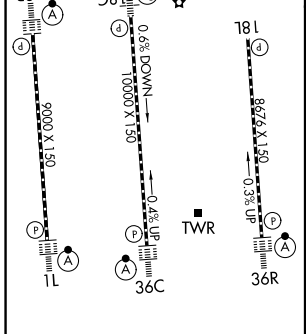
CHARLOTTE/DOUGLAS INTL (CLT)

DME or RADAR required. RADAR required for procedure entry.		ALSF-2 	MISSED APPROACH: Climb to 1200 then climbing left turn to 4000 on heading 280° and on BZM VOR/DME R-184 to BUDKE/BZM 26.5 DME/RADAR and hold.
Simultaneous approach authorized.			

D-ATIS 121.15	CHARLOTTE APP CON 128.325 (001°-119°) 257.2 (180°-359°) 120.05 (120°-295°) 307.8 (360°-179°) 134.75 (296°-360°)		CHARLOTTE TOWER 118.1 257.8 (18L-36R) 126.4 257.8 (18C-36C) 133.35 257.8 (1L-19R)	GND CON 121.8 348.6 (W) 121.9 348.6 (E)
-------------------------	---	--	--	---



ELEV 748	D	TDZE 744
----------	----------	----------



CATEGORY	A	B	C	D
S-ILS 1L	CAT II RA 106/12 100 DA 844			
S-ILS 1L	CAT III RVR 06			

CATEGORY II & III ILS SPECIAL AIRCREW & AIRCRAFT CERTIFICATION REQUIRED

SE-2, 11 JUN 2026 to 09 JUL 2026

SE-2, 11 JUN 2026 to 09 JUL 2026