

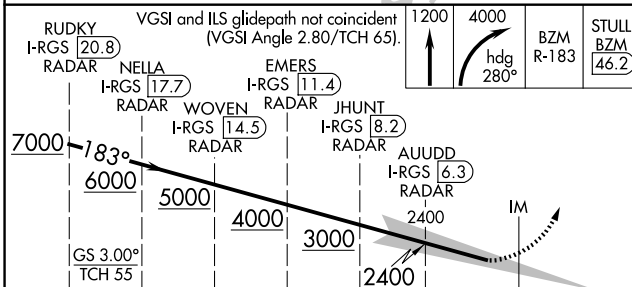
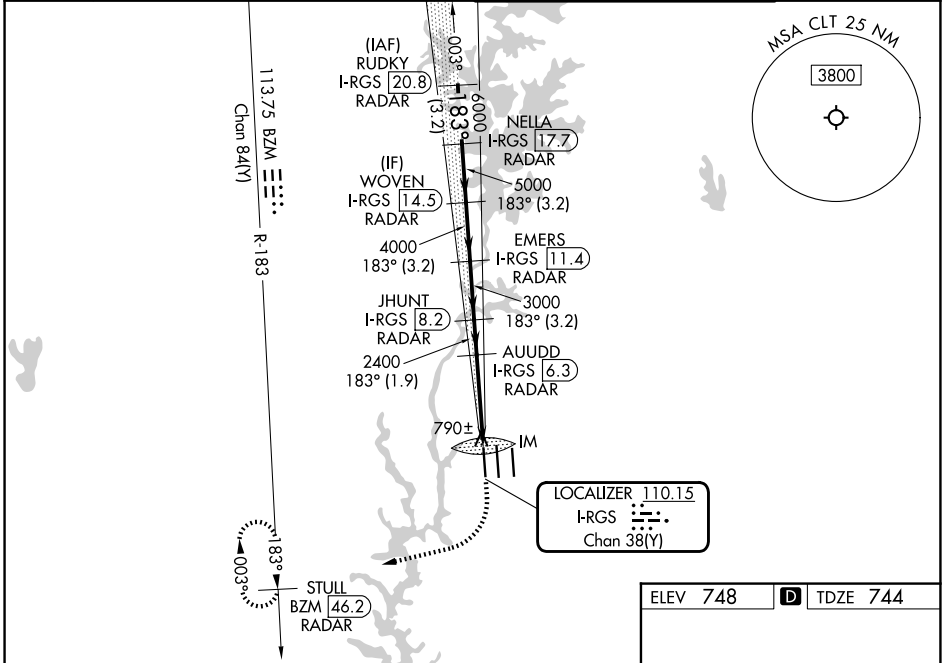
LOC/DME I-RGS <b>110.15</b> Chan <b>38(Y)</b>	APP CRS <b>183°</b>	Rwy Ldg TDZE <b>744</b> Apt Elev <b>748</b>
-----------------------------------------------------	------------------------	---------------------------------------------------

# ILS RWY 19R (SA CAT I)

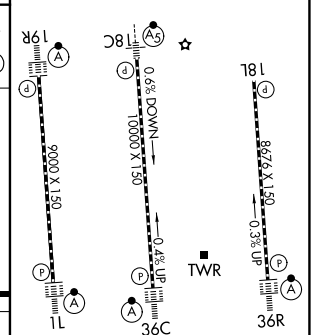
CHARLOTTE/DOUGLAS INTL (CLT)

DME or RADAR required. RADAR required for procedure entry.		ALSIF-2 	MISSED APPROACH: Climb to 1200 then climbing right turn to 4000 on heading 280° and on BZM VOR/DME R-183 to STULL/BZM 46.2 DME/RADAR and hold, continue climb-in-hold to 4000.
Simultaneous approach authorized. Requires specific OPSPEC, MSPEC, or LOA approval.			

D-ATIS <b>121.15</b>	CHARLOTTE APP CON		CHARLOTTE TOWER		GND CON
	<b>128.325</b> (001°-119°)	<b>257.2</b> (180°-359°)	<b>118.1</b>	<b>257.8</b> (18L-36R)	<b>121.8 348.6</b> (W)
	<b>120.05</b> (120°-295°)	<b>307.8</b> (360°-179°)	<b>126.4</b>	<b>257.8</b> (18C-36C)	<b>121.9 348.6</b> (E)
	<b>134.75</b> (296°-360°)		<b>133.35</b>	<b>257.8</b> (1L-19R)	



ELEV 748	<b>D</b> TDZE 744
----------	-------------------



CATEGORY	A	B	C	D
S-ILS 19R	RA 228/14		150 DA 894	

**SA CATEGORY I ILS SPECIAL AIRCREW & AIRCRAFT CERTIFICATION REQUIRED**

HIRL all Rwys  
REIL Rwy 18L  
TDZL/RCLS Rwys 11L, 19R, 36C and 36R

SE-2, 11 JUN 2026 to 09 JUL 2026

SE-2, 11 JUN 2026 to 09 JUL 2026