

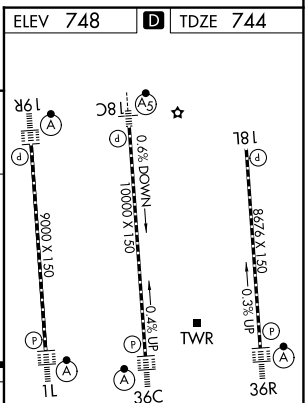
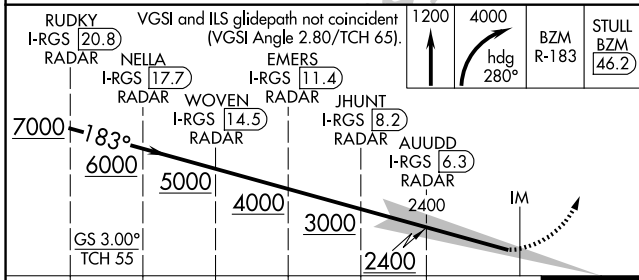
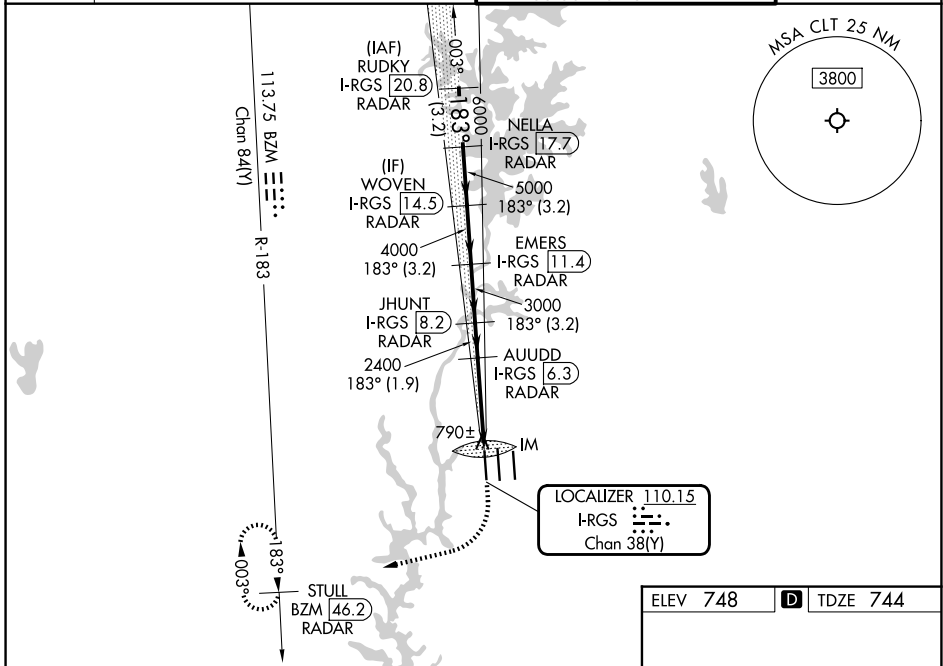
LOC/DME I-RGS 110.15 Chan 38(Y)	APP CRS 183°	Rwy Ldg TDZE 744 Apt Elev 748
---	------------------------	---

ILS RWY 19R (CAT II & III)

CHARLOTTE/DOUGLAS INTL (CLT)

DME or RADAR required. RADAR required for procedure entry.		ALSF-2 	MISSED APPROACH: Climb to 1200 then climbing right turn to 4000 on heading 280° and on BZM VOR/DME R-183 to STULL/BZM 46.2 DME/RADAR and hold, continue climb-in-hold to 4000.
Simultaneous approach authorized.			

D-ATIS 121.15	CHARLOTTE APP CON		CHARLOTTE TOWER		GND CON
	128.325 (001°-119°)	257.2 (180°-359°)	118.1	257.8 (18L-36R)	121.8 348.6 (W)
	120.05 (120°-295°)	307.8 (360°-179°)	126.4	257.8 (18C-36C)	121.9 348.6 (E)
	134.75 (296°-360°)		133.35	257.8 (1L-19R)	



CATEGORY	A	B	C	D
S-ILS 19R	CAT II RA 106/12 100 DA 844			
S-ILS 19R	CAT III RVR 06			

CATEGORY II & III ILS SPECIAL AIRCREW & AIRCRAFT CERTIFICATION REQUIRED

HIRL all Rwys
REIL Rwy 18L
TDZL/RCLS Rwys 1L, 19R, 36C and 36R

SE-2, 11 JUN 2026 to 09 JUL 2026

SE-2, 11 JUN 2026 to 09 JUL 2026